

QUALITY ADVANTAGE COMPRESSORS

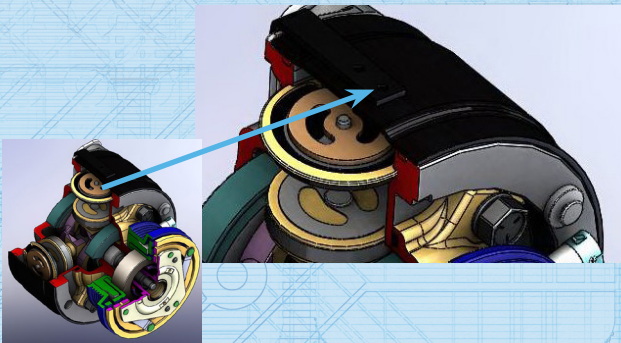
O.E. FIT & FORM DEPENDABLE QUALITY



Four Seasons® R4 Unit

Manufactured in-house, Four Seasons® quality R4 unit is assembled with the highest standards to provide our customers with a unit they can depend on.

THE R4 DIFFERENCE

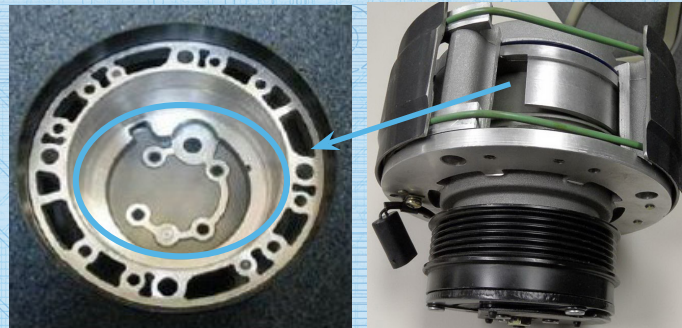


FOUR SEASONS® UNIT

Four Seasons® employs a more durable piston yoke design with a wrap around discharge passage, allowing for larger volume (188cc).

FOUR SEASONS® UNIT

Four Seasons® unit includes a large suction port for maximum volume to the compressor. Our smooth sealing surface insures proper sealing.

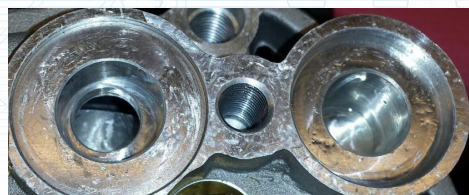


COMPETITOR UNIT

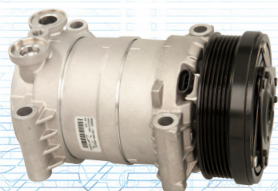
The competitor R4 scroll design has less performance in volume (106cc) by using a smaller displacement along with a very small discharge passage.

COMPETITOR UNIT

The competitor unit gives the illusion of a larger suction port, however, the amount of volume it takes in is less than our unit. A rough sealing surface may cause sealing washers to leak.



QUIET. DURABLE. RELIABLE. DIRECT DROP-IN-REPLACEMENT



Four Seasons® H-Series p/n 88950

Manufactured in-house, Four Seasons® quality HT6 unit has been engineered using a durable 10 cylinder design for quieter operation. This drop in replacement provides a smoother, reliable performance.

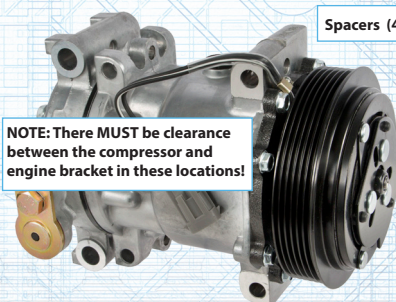
THE H-SERIES DIFFERENCE



FOUR SEASONS® UNIT

Four Seasons® manufactures tangents to exact O.E. specs allowing for a no fuss direct drop-in-replacement.

COMPETITOR UNIT



Spacers (4 required)



COMPETITOR UNIT

The competitor unit requires the use of spacers to align the compressor properly to the bracket. 7 piston wobble plate design case converted to H6 tangent.

FOUR SEASONS® UNIT

The Four Seasons® 10 piston swash plate design allows for greater volume (170cc) efficiency. With less torque required to move pistons, this unit is able to provide quieter performance and smoother operation. The dowel pin design prevents twisting of case halves, an overall improvement over the O.E.

COMPETITOR UNIT

The competitor uses a 7 piston wobble plate design with less volume (155cc) efficiency. The variable displacement requires more torque to rotate internal gears which results in a noisy unit.

